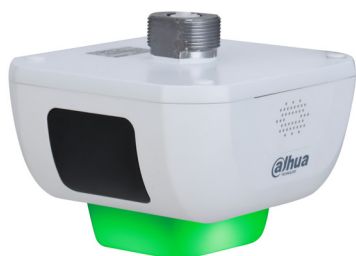


DHI-IPMPGU-3201-DC12

Parking Spot Indicator Light



- External indicator light that connects to the camera through RS-485. One indicator is assigned to each parking spot.

System Overview

The DHI-IPMPGU-3201-DC12 model of the Parking Spot Indicator Light connects to the spot detection camera through RS-485 to detect whether there are vehicles in the parking spot. The indicator can display 7 different colors, which you can easily configure.

Functions

Seven Color Indicator Light

Its indicator lights come in 7 colors, and can be configured to display the status of parking spots.

Scene

It is suitable for indoor parking lots and semi-enclosed parking buildings.

Technical Specification

Basic

Parking Spot Indicator	1, 7 customizable colors (red, yellow, blue, green, cyan, white, and pink)
------------------------	--

General

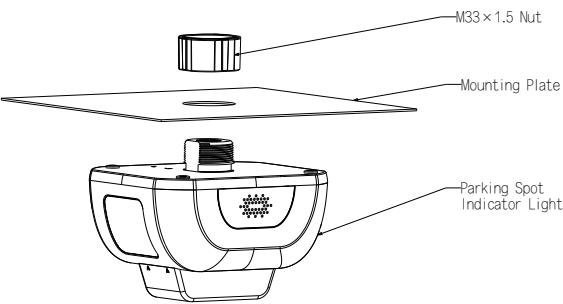
Power Supply	12–48 VDC
Power Consumption	<2 W
Operating Temperature	–20 °C to +50 °C (–4 °F to +122 °F)
Operating Humidity	10%–95% (RH), non-condensing
Protection	IP54
Product Dimensions	120 mm × 136 mm × 105 mm (4.72" × 5.35" × 4.13") (L × W × H)
Net Weight	0.3 kg (0.66 lb)
Gross Weight	0.5 kg (1.10 lb)
Installation	Cable tray mount

Port

RS-485	1
--------	---

Ordering Information		
Type	Model	Description
Parking Spot Indicator Light	DHI-IPMPGU-3201-DC12	RS485 Indicator

Installation



Dimensions (mm[inch])

